



STUDENT GOVERNMENT
CITATION PAYBACK COURSE

WELCOME TO THE COURSE

WELCOME TO FLORIDA ATLANTIC UNIVERSITY STUDENT GOVERNMENT CITATION PAYBACK PROGRAM. THE FOLLOWING COURSE WAS DESIGNED TO INFORM STUDENTS OF THE RULES AND REGULATIONS SET BY PARKING AND TRANSPORTATION AS WELL AS FAU PD. THIS PROGRAM WAS DESIGNED IN CONJUNCTION WITH BOTH THE ABOVE DEPARTMENTS AS WELL AS STUDENT GOVERNMENT NIGHT OWLS.

THE COURSE ITSELF IS DESIGNED TO PREVENT YOU FROM FUTURE CITATIONS AND PROVIDE YOU THE INFORMATION YOU NEED TO BECOME A SUCCESSFUL STUDENT.



HOW DID I GET A CITATION

WHETHER YOU ARE AN ON-CAMPUS STUDENT OR A COMMUTER STUDENT, EVERYONE MUST FOLLOW THE GUIDELINES SET BY PARKING AND TRANSPORTATION!

SOME OF THE MOST COMMON WAYS TO GET A CITATION

- 1) PARKING IN THE WRONG COLOR LOT
- 2) PARKING IN A HANDICAP SPACE
- 3) PARKING IN A FIRE LANE
- 4) PARKING ON THE GRASS
- 5) PARKING IN ANY DESIGNATED PARKING SPACE WITH A DESIGNATED SIGN

PERMIT TYPES AND WHERE TO PARK

ON-CAMPUS RESIDENTS: **GREEN** PASS

COMMUTER STUDENTS: **BLUE** PASS

FACULTY AND STAFF: **RED** PASS

EACH OF THESE PERMIT TYPES HAS DESIGNATED PARKING AREAS ON CAMPUS. THESE PARKING AREAS ARE DISPLAYED ON THE CAMPUS MAP ON THE NEXT SLIDE.



PARKING COLOR MAP



CITATION APPEAL PROCESS

Parking citations issued by Parking and Transportation Services can be appealed if you feel that the citation was issued in error or that there were extenuating circumstances associated with the citation. The appeal for the citation must be submitted within fourteen (14) calendar days of the issue date of the citation. Appeals for citations are submitted online through your Parking and Transportation account. Tow fees and Boot fees are not eligible for appeal.

First Appeal

The first appeal is reviewed by the Assistant Director of Parking and Transportation Services or designee. The Assistant Director or designee will review the appeal and upon determining the outcome, notify the appellant in writing by email of the decision. If the citation is sustained, the fine must be paid within fourteen (14) calendar days of the date of the Committee's decision, unless a final appeal is timely filed.

Second (Final) Appeal

A final appeal of the citation may be made by requesting a hearing before the Parking Violations Appeal Board. The Board is composed of seven (7) members: two (2) faculty, three (3) staff members from the University community, two (2) students and two (2) alternates. The Chief of Police or designee will act as advisor to the Board. The Board must establish a quorum to hear appeals. A quorum shall be defined as a minimum of five (5) members of the Parking Violations Appeal Board.

The final appeal must be submitted within fourteen (14) calendar days of the decision on the first appeal. The documentation that was reviewed will be forwarded to the Board, however the Board will make an independent determination of the case. The individual will be notified of the date, time, and location of the hearing and may present evidence. If the individual elects not to attend the hearing, the written appeal will be read aloud for the Board to review. The individual will be notified in writing of the decision of the Board. If the citation is sustained, the fine must be paid within fourteen (14) calendar days of the Board's decision. The Parking Violations Appeal Board is the final appeal authority; no further appeals are permitted.

CITATION APPEAL PROCESS

CITATION PAYMENTS MUST BE MADE WITHIN 14 CALENDAR DAYS OF ISSUANCE OF THE CITATION. ON THE 15TH DAY A LATE FEE OF \$25.00 WILL BE ADDED ON TO THE OUTSTANDING BALANCE OWED. PLEASE FOLLOW THE STEPS BELOW TO PAY CITATION(S):

1. GO TO YOUR MYFAU ACCOUNT. ([MYFAU.FAU.EDU](https://myfaul.fau.edu))
2. CLICK ON THE "MONEY MATTERS TAB".
3. CLICK ON THE "FAU PARKING AND TRANSPORTATION SERVICES" LINK.
4. CLICK ON THE LINK "PAY CITATIONS".
5. SEARCH FOR CITATION BY EITHER CITATION NUMBER OR LICENSE PLATE.

ANY PERSON IN VIOLATION OF ANY STATE OF FLORIDA TRAFFIC LAW SHALL BE SUBJECT TO THE APPLICABLE STATE FINES. AN INDIVIDUAL CHARGED WITH AN INFRACTION MUST EITHER PAY THE PRESCRIBED FEE OR APPEAL THE CITATION WITHIN 14 CALENDAR DAYS OF ISSUANCE OF THE CITATION. IF PAYMENT OF THE FINE IS NOT RECEIVED IN THE PARKING AND TRANSPORTATION SERVICES OFFICE WITHIN FOURTEEN (14) DAYS, A \$25.00 LATE FEE WILL BE IMPOSED. ANY STUDENT WITH AN UNPAID PARKING OR OTHER CITATION WILL NOT BE PERMITTED TO REGISTER FOR CLASSES NOR RECEIVE A TRANSCRIPT OF ACADEMIC ACHIEVEMENT, GRADES OR A DIPLOMA UNTIL ALL FINES AND FEES ARE PAID IN FULL.

TIPS ON HOW TO AVOID CITATIONS

THERE ARE SEVERAL WAYS THAT YOU CAN AVOID GETTING A PARKING CITATION:

- 1- Meters are enforced 24/7. Vehicles with FAU Permits are not permitted to park at any meters.
- 2- If a meter is malfunctioning do not park at that space
- 3- Vehicles are required to park "NOSE IN". Backing in or pulling through spaces is prohibited.
- 4- Permits must be Displayed at all times according to permit Instructions.
- 5- All lots have signs indicating the type of permits allowed. Green Permit Lots and Reserved Spaces are enforced 24/7. All other lots are enforced 7:00 AM – 6:00 PM.
- 6- Do not park In Handicap Spaces even for a few minutes
- 7- Do not leave vehicle unattended in front of buildings in fire lanes

OTHER OFFERED SERVICES

PARKING AND TRANSPORTATION OFFERS A FEW AWESOME PROGRAMS FOR STUDENTS. THESE PROGRAMS ARE A WAY THAT YOU CAN AVOID MAKING A POOR DECISION AND NOT FOLLOWING THE PARKING RULES.

Intercampus Shuttle Bus

Parking and Transportation Services now provides a free intercampus shuttle service. Students, faculty, and staff can enjoy hassle-free, convenient transportation between the Boca Raton and Jupiter campuses. The shuttle service will operate from Monday through Friday, departing daily from the Boca Raton campus to the Jupiter campus at 7:30 AM. There will be a total of two trips between campuses, with the final trip returning to the Boca Raton Campus from the Jupiter campus at 3:15 PM. The shuttle will pick-up and drop-off at the same location on each campus. See below for shuttle route departure times and pick-up / drop-off locations.

7:30 AM - Boca Raton to Jupiter - Arrive 8:15AM
8:30 AM - Jupiter to Boca Raton Arrive 9:15AM
9:30 AM - Boca Raton to Jupiter - Arrive 10:15AM
10:30 AM - Jupiter to Boca Raton Arrive 11:15AM
2:00 PM - Boca Raton to Jupiter - Arrive 2:45PM
3:00 PM - Jupiter to Boca Raton Arrive 3:45PM
5:30 PM - Boca Raton to Jupiter - Arrive 6:15PM
6:30 PM - Jupiter to Boca Raton Arrive 7:15PM

Campus Shuttle Bus

Parking and Transportation Services provides a free on-campus shuttle service designed to help move people quickly around campus. Riding the shuttle will allow you to park your car in the morning and move between classes without having to find another parking space on campus.

Multiple shuttles run during service hours in order to help ensure that you never have to wait long to be picked up at any of the stops conveniently located on campus. Currently, we have two shuttle routes operating on campus. One route is circular and services the external part of campus. The other shuttle extends to lot 5, and is assigned strictly to lot 5 on Tuesdays and Thursdays. See below for shuttle route hours of operation.

Red: 7:30 AM - 7:15 PM - Monday-Thursday; 7:30 AM - 4:45 PM - Friday
Blue: 8:00 AM - 5:00 PM - Monday-Thursday
Silver: 10:30 AM - 4:45 PM - Tuesday & Thursday
Summer: 8:30 AM - 4:45 PM - Monday-Thursday

PARKING AND TRANSPORTATION CONTACT INFORMATION

IF YOU HAVE ANY QUESTIONS OR NEED INFORMATION RELATED TO PARKING SERVICES
AT FLORIDA ATLANTIC UNIVERSITY PLEASE CONTACT THE OFFICE THROUGH THE
CHANNELS BELOW:

Parking Office

Boca Raton Campus
777 Glades Rd
Building 80 (Student Services)
Boca Raton, FL 33431

561-297-2771

561-297-2382 Fax

faupark@fau.edu



ROAD AND VEHICLE SAFETY



WHY DO WE CARE ABOUT ROAD SAFETY?

THE ANSWER IS PRETTY SIMPLE. WE LOOK OUT FOR THE WELL BEING OF OTHER HUMANS AROUND US. ROAD SAFETY RULES AND LAWS WERE ENACTED TO MAKE THE ROADWAYS A SAFE PLACE FOR ALL. THESE SAME RULES APPLY TO EVERY FLORIDA ATLANTIC UNIVERSITY CAMPUS.

THIS PORTION OF THE COURSE EXAMINES CERTAIN ASPECTS OF THE BOCA RATON FAU CAMPUS AND HOW CERTAIN ROAD LAWS APPLY.

DISTRACTED DRIVING

ONE OF THE BIGGEST CONTRIBUTORS TO ACCIDENTS IS DISTRACTED DRIVING. WHETHER YOU ARE TEXTING, SURFING THE WEB, EATING FOOD, OR EVEN GRABBING YOUR SUNGLASSES OFF THE CARPET UNDER THE SEAT. ALL THESE THINGS DISTRACT YOU FROM THE ROAD LEADING TO ACCIDENTS.

WHY DOES THIS PERTAIN TO THE BOCA CAMPUS?

WE HAVE HAD SEVERAL AUTO ACCIDENTS INVOLVING STUDENTS. THESE HAVE RESULTED IN SEVERE INJURIES AND MAJOR LAWSUITS.

PLEASE COPY THE VIDEO LINK AND WATCH THE VIDEO BELOW AS QUESTIONS ON THE POST TEST WILL BE FROM THE VIDEO.

[HTTPS://WWW.YOUTUBE.COM/WATCH?V=FHb_LTCG048](https://www.youtube.com/watch?v=FHb_LTCG048)

STREET SIGNS AND INTERSECTIONS

WHY DO I HAVE TO KNOW ABOUT STREET SIGNS, I ALREADY HAVE MY LICENSE WHY DO I NEED TO CARE?

YES, YOU HAVE A LICENSE, THAT DOESN'T MEAN A REFRESHER ON SIGNAGE AND INTERSECTION LAWS ISN'T NECESSARY. SOME OF THE MORE SEVERE ACCIDENTS HAPPEN AT INTERSECTIONS, STOP SIGNS, YIELD SIGNS, AND CROSSWALKS.



PEDESTRIANS IN CROSSWALK SIGN

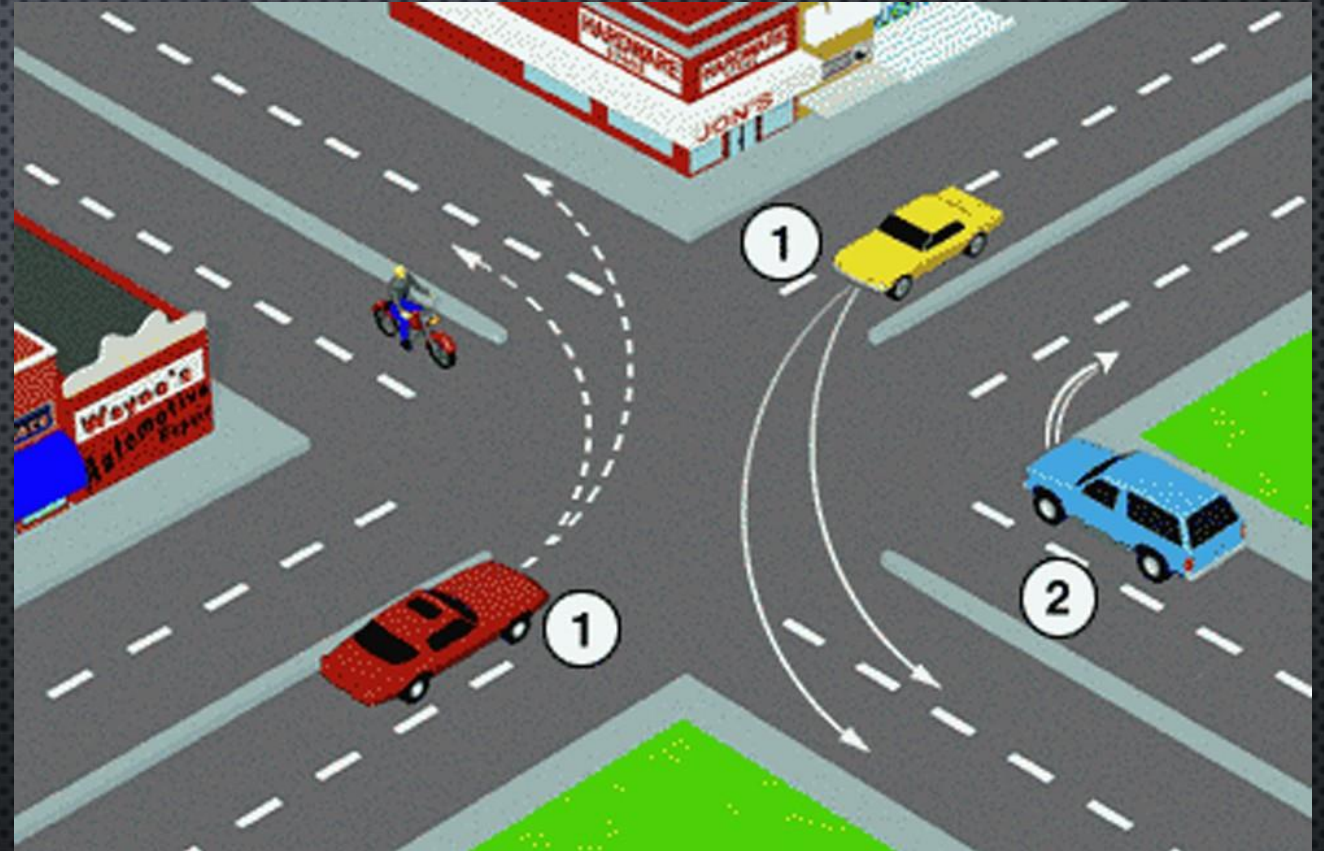
THIS IS BY FAR THE MOST IMPORTANT SIGN YOU WILL FIND ACROSS ALL CAMPUSES OF FAU. THESE ARE POSTED AT EVERY INTERSECTION WITH A CROSSWALK. THESE ARE IMPORTANT BECAUSE THIS IS THE MOST OVERLOOKED SIGN. OVER THE PAST FEW YEARS FAU STUDENTS AND FACULTY HAVE FALLEN VICTIM TO BEING HIT BY VEHICLES IN CROSSWALKS. THAT'S WHY THIS SIGN IS SO IMPORTANT AND MUST BE FOLLOWED.



RIGHT OF WAY

At intersections, it can be difficult to anticipate the actions of other drivers. These general rules were created to decrease the chance of a collision and to alert other drivers when right of way should be given. Yield the right of way at an intersection when:

- You are at a “T” intersection—yield to traffic on the through road.
- Returning to the road after the car has been parked.
- You arrive at stop sign at the same time as another vehicle.
 - Yield to the vehicle on your right.
- Another vehicle reaches an intersection first.
- You're making a turn and another vehicle is going straight.



RIGHT OF WAY

Things to Remember

The law does not give anyone the right of way on the road. Instead, it states who is required to yield the right of way in certain instances. It is also the responsibility of the driver to do everything possible to be safe and avoid a collision.

Here are some other right-of-way tips you should keep in mind:

- Never assume what another driver on the road is going to do.
- Never insist on taking the right of way.
- Yield whenever it is needed to be safe.
- Make eye contact with other drivers at intersections when possible.
- Try to anticipate the actions of other drivers whenever possible.

